

Why is having a Surveillance System important for your Business or Environment?

What Is CCTV?

CCTV cameras are used for security monitoring and surveillance in any type of facility. CCTV stands for Closed-Circuit Television, because CCTV systems transmit video footage over a single channel, essentially creating a closed circuit. This means CCTV footage is displayed on a limited number of personal monitors and screens, not publicly broadcasted.

How Does CCTV Work?

CCTV systems use cameras to capture video footage of a facility. This footage is sent to a recording device (a DVR or NVR), where it is stored for future reference. It is then sent from the cameras to a dedicated monitor, or even a smartphone or computer, which displays the footage in real time. CCTV security systems are connected with a coaxial cable, network cable, or wireless signal, depending on the system type.

CCTV cameras are typically placed at business entrances and around the perimeter, as well as in strategic places inside the building. They guard merchandise, data, and the safety of employees and visitors by monitoring and recording everyone that comes near. CCTV surveillance cameras work to prevent crime around the clock, letting property managers and security staff instantly see and respond to security breaches in all areas of a property. Anyone who commits a crime on the property is taped, providing easy identification and legal evidence.

Type of Security Service;

- 1- Home Security Solution
- 2- Building and Condo Solution
- 3- University and Smart Campus Solution
- 4- Retail Solution
- 5- Ware and Logistics Security System Solution
- 6- Smart Banking and Financing Solution
- 7- Navigated & Transportation Security Solution
- 8- Thermal Solution for Fire Detection
- 9- Traffic Solution
- 10- Safe & Smart City Solution

GlobalNet
Global Technology Company

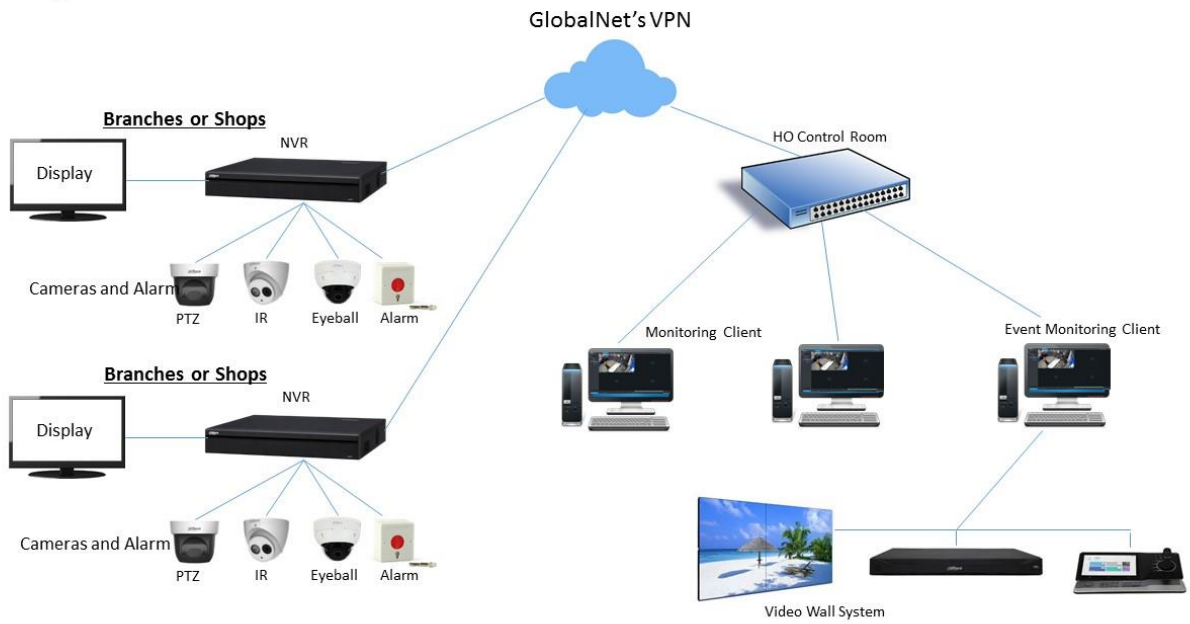
**YOUR SURVEILLANCE
BRANCHES**

+

**GLOBALNET'S
VIRTUAL PRIVATE NETWORK**

CENTRALIZED YOUR BUSINESS WITH US

Design



CB Bank



Ministry Of Commerce

YCDC



Mingalar Cinema Group

GlobalNet
Global Technology Company

THERMAL CAMERA 3 SERIES



- ✓ 256 X 192
- ✓ HYBRID THERMAL CAMERA
- ✓ AI NVR
- ✓ 4TB HDD
- ✓ 32" LED DISPLAY
- ✓ TRIPOD OR STAND & OTHER ACCESSORIES

DH-TPC-BF3221P-T

GlobalNet
Global Technology Company

BODY TEMPERATURE AND ACCESS CONTROL



- ✓ 7-INCH FACE RECOGNITION SOLUTION
- ✓ 100,000 FACES
- ✓ ABNORMAL ALARM AND VOICE PROMPT
- ✓ NO MASK WARNING OR BLOCKING
- ✓ TEMPERATURE MONITORING
- ✓ MEASUREMENT DISTANCE 0.3M-1.8M

DHI-ASI7213X-T1

GlobalNet
Global Technology Company

BODY TEMPERATURE AND METAL DETECTOR



- ✓ BODY TEMPERATURE MEASUREMENT
- ✓ METAL DETECTION FOR 18 ZONES
- ✓ FACE RECOGNITION
- ✓ FACE INFORMATION BINDS WITH
- ✓ TEMPERATURE RECORD
- ✓ MEASUREMENT DISTANCE 1-2.5 CM

OPD-533TM